



NEWSLETTER

Volume 20 Issue 08

September 2024

<p><u>Next Regular Guild Meeting:</u> September 12, 6pm ~At Ascend Services 2818 Meadow Lane, MTWC</p>	<p><u>Upcoming Guild Events:</u> ~Sept 13-15 Fall Camp Quilt</p>
<p>Quilt Show Corner - Page 4-5 Mystery Quilt - Page 5-6</p>	
<p>Sept. Hostesses: Ellen Buck, Kathy Guralski, Gretchen Scheidt & Ann Zeman. Oct. hostesses: Mary Hutchison, Nan Groll, Winnie Krajnek, Tammy Ricks.</p>	

Starting September:

**NEW GUILD TIME:
6 PM**

From the President:

Greetings and welcome back to another great year with A Patch of the Lakeshore Quilters! Our first meeting will be September 12 **AT 6 PM** at Ascend Services. Please think about calling a friend to come with, either a guild member or someone who might become one. You know that Show & Tell is always a highlight of our meetings for everyone, so I'm hoping we'll have plenty to share with what you've all done over the summer.
~Ellen Lewellen



BOMquilts.com's Quilt Note



*Two sewing machines are in a bar.
One turns to the other & says,
"Hey, aren't you a Singer?!"
It turns & says, "Why? Ja-no-me?"*



*And then the bartender
said, "Oh Brother!"*

~ Patch of Lakeshore Quilters ~ Aug. 8, 2024 Picnic Notes ~

- The August 8, 2024 POLQ picnic was held at Ascend.
- Picnic committee/hostesses Cindy Dillman, Pam Posvic, Linda Londo and Kim Hafemen had the room decorated in a tropical theme and served a wonderful spread of picnic food complete with sub sandwiches and blender-made drinks.
- Some members came dressed in bright tropical colors.
- A brief business meeting thanked the committee, talked about the upcoming county fair quilt raffle, open slots for committees for the coming year, and the new meeting start time of 6pm beginning in September.
- Lucy Zeldenrust also announced an estate sale at her old address Aug. 22-25 with lots of fabric and quilting supplies.
- The Show and Tell was also a highlight.
- Bonnie Loeh made the motion to adjourn, with Mary Kay Burish seconding.
- Kim led some fun games—have you ever tried to free motion quilt with paper and pencil and someone else moving the paper?
- Thanks again to the Picnic Committee!!!

Shared with the guild:

"Forty and Fabulous" Sheboygan County Quilters Guild Quilt Show

Saturday, September 14th, 2024, 9:00 to 4:00 p.m.

*Sheboygan County Christian School Campus, 929 Greenfield Avenue,
Sheboygan, WI 53081*

- *Quilts and quilted items displayed for viewer's enjoyment*
- *Vendors and members selling a wide array of quilting related items from thread to sewing machines*
- *Raffle with prizes of quilts, quilted items made by guild members*
- *Lunch and Refreshments available on site*

Admission of \$5.00. Children 12 years and under FREE

Calico Capers Quilt Guild "Fabulous 40" Quilt Show

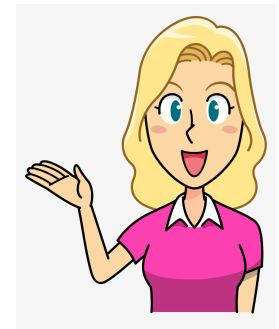
Saturday, October 12, 2024 8:30 am—3:30 pm

Montello High School Gym

Handicapped Accessible

222 Forest Lane, Montello, Wisconsin

ADMISSION @ DOOR: \$5.00 per person



Notes from Board meeting: 7/25/24 at Ellen Lewellen's house

Retiring and new board members of POLQ came together 7/25/24 to make plans for the coming program year and to "pass the baton".

- The first item was to vote on moving the start time of our meetings to 6 PM. This had been requested by several members to avoid finishing so late. After several months waiting for input from the membership with no negative comments received, the board voted unanimously to make the change.
- The next discussion centered on the information being gathered for our annual booklet. It was decided to keep pretty much the same format with the same committees, charging members who want one for our cost. Program planning is underway, with Christmas and picnic months as usual, and time reserved for Quilt Show planning and making props. Ellen made personal calls to all previously registered active members who had not yet returned their registrations, so the decision was made to go ahead and publish the booklet with the names we have. Of course anyone can join at any time!
- The longest discussion centered on preparing a budget for the coming year. Last year's budget was reviewed line by line with suggestions made for increases or decreases. We hope to have the proposed document ready for the guild to vote on at the September meeting.
- Sue Marquardt came to show samples of labels we could order for sewing into our charity quilts, but with the associated costs, the group decided to explore printing our own. Naomi is looking into making a sample.
- We also set up times to transfer keys and signatures at the bank and post office.
- The final item was a general discussion of the direction the guild moving this year and into the future. We don't want the spring quilt show to overshadow everything this year! We'd like to keep a fun and friendly atmosphere which promotes quilting and features ideas for both beginning and advanced members. We may not have as many members as the guild once did — the popularity of quilting seems to be waning everywhere and we certainly understand peoples' priorities change as family responsibilities shift and health problems crop up — but we think our guild has something special to offer!
- Lastly, Ellen announced something new. She will have a "tip jar" available at meetings. Members can write down suggestions, ideas, and even jokes to submit. There may even be prizes involved if ideas are used!

Let's get charged up to make quilts and make this a great year!

Submitted by Ellen Lewellen

👩👩👩 2025 Quilt Show Corner 👩👩👩

Quilt Show Set Up: April 3 & 4. Quilt Show Open: April 5 & 6 Event at the MTWC Expo Center	2025 Quilt Show Chairs: Julie Klumpp & Kathy Guralski
Theme: <i>Garden Party</i>	Featured Quilter: <i>Mary Hutchison</i>

General info:

- Fat Quarter donations are being accepted for the raffle baskets at the quilt show. Linda Londo is a contact person for the raffle baskets.
 - Funds received from the raffle baskets go towards a local charity (still being determined).
- **Challenge Quilt**
 - Submitted piece must be in quilt form: 3 layer sandwich: fabric top, batting and fabric back, quilted.
 - Overall measurements not to exceed 100" total on all sides (ie 25x25x25x25 OR 10x40x10x40). Can be any shape.
 - May be an original work or a pattern. No kits.
 - Must follow theme of the show: Garden Party.
 - Must use a recognizable amount of any floral fabric in piece. Other fabrics may be used as well.
 - Piece must be registered on standard form (coming out sometime this fall) that is distributed by guild and submitted per deadline/instructions on form.

Quilt Show General Info:

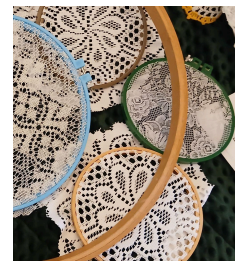
While the newsletter will have information about the quilt show, the best way to access all the needed info will be the [Guild Website](#). I (Naomi) continue to work on building a webpage about the Quilt Show in general (specifically for public knowledge), and a page especially for guild members. This page will have information about committees, registration forms for quilts being entered into the show, and more.

(thank you for your patience, the website is not difficult, but it is time consuming and life is hectic. Details are still being finalized for the registration form, etc.)
If you have Quilt Show info you would like included (in the newsletter or website), send me an email at naomianderson428@gmail.com.

🌸🌸🌸 2025 Quilt Show Corner - Continued 🌸🌸🌸

● In Search Of:

- Hello everyone, Naomi here. I'm wearing my "Props Committee Chair Hat" to ask you for some supply donations.
- Just so we're all on the same page, these items will NOT be returned to you (so "sharing" grandma's special florals, or your seasonal florals that you still want to use is not a good idea).
 - Think thrift shops, garage sales, or items you are cleaning out of your home.
- Items I'm looking for:
 - Florals
 - Greenery (think ivys, and leafy greens)
 - Florals in white, pinks and purples, especially "droopy" flowers (think wisteria-like)
 - Embroidery Hoops
 - Any size, any type, any color
 - Doilies and Lace type items
 - Old curtains, table runners, etc
 - Fyi, these will likely be cut up, so nothing valuable
 - Twisted crafting paper
 - You remember, the stuff everyone used to make christmas angel ornaments out of. 😊
 - White, ivory, pinks, purples, and greens



??? 2024-2025 Mystery Quilt ???

~ Pattern on page 6 ~ quantity: make 1 block ~

This year's mystery quilt features 16 different 10-1/2" blocks, making a quilt that finishes up at 54-1/2" X 54-1/2". There is an additional month for sashing and borders. I began the blocks with 2 yards of background fabric and a whole lot of scraps. Ladies, another chance to get out that scrap basket. Each month I will bring my block to the quilt guild meeting so you can see the progress. It is definitely not a difficult quilt as far as the piecing goes and there is no applique. If you are undecided as to whether you want to join in on the mystery, watch the blocks appear each month and decide then. You are always able to get past blocks on our website. ~Chris Bauknecht

Vintage Delight

10" x 10" Finished

by Lori Holt

beeinmybonnetco.blogspot.com @beelori1

CONFETTI COTTON SOLIDS

BY RILEY BLAKE DESIGNS

C120-RILEYWHITE

(Fabric 1)

C120-RILEYORANGE

(Fabric 2)

C120-RILEYRED

(Fabric 3)

C120-RILEYCORAL

(Fabric 4)

EXPRESSIONS HAND-DYES

BY RILEY BLAKE DESIGNS

BTCB210 Snow White

(Fabric 1)

BTHH133 Mandarin

(Fabric 2)

BTHH579 Apple 1

(Fabric 3)

BTHH127 Pale Coral

(Fabric 4)

CUTTING INSTRUCTIONS

Fabric 1:

- A – (12) 2 ½" squares
- B – (4) 2 ½" x 4 ½" rectangles

Fabric 2:

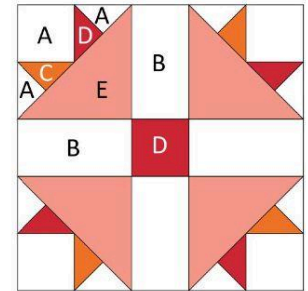
- C – (4) 2 ½" x 4 ½" rectangles

Fabric 3:

- D – (5) 2 ½" squares

Fabric 4:

- E – (4) 4 ½" squares



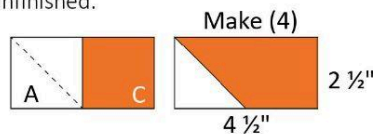
ADDITIONAL TOOLS NEEDED:

BASIC SEWING SUPPLIES	2 ½" CUTE CUTS RULER
2 ½" TRIM-IT RULER	2 ½" x 4 ½" CUTE CUTS RULER
4 ½" TRIM-IT RULER	4 ½" CUTE CUTS RULER
10 ½" TRIM-IT RULER	RILEY BLAKE DESIGNS QUILTY TOOLS™ ¼" PLUS RULER

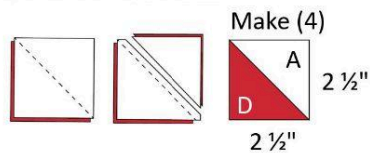
SEWING INSTRUCTIONS

SNF = STITCH AND FLIP

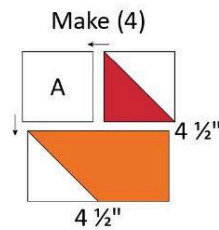
1. Draw a diagonal line on the wrong side of (8) A – squares and (4) E – squares.
2. Align (4) marked A – squares with bottom left corner of (4) C – rectangles, right sides together. Sew on the drawn diagonal lines. Trim excess corner fabric to ¼". Press toward the corners to make (4) A/C SNF units that measure 2 ½" x 4 ½" unfinished.



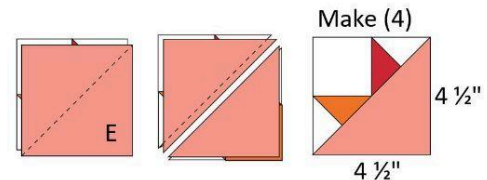
3. Place (4) marked A – squares with (4) D – squares, right sides together. Sew on the drawn diagonal lines. Trim excess corner fabric to ¼". Press toward the corners to make (4) A/D SNF units that measure 2 ½" x 2 ½" unfinished.



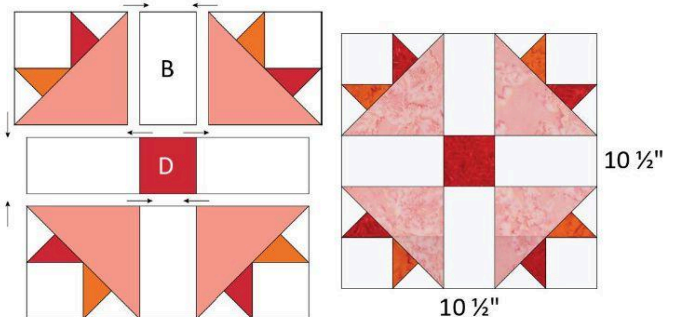
4. Arrange (1) unmarked A – square, (1) A/D SNF unit, and (1) A/C SNF unit as shown. Sew A – square and A/D unit together and press in direction of arrow. Then add A/C unit to bottom edge to form a pieced unit and press. The pieced unit should measure 4 ½" x 4 ½" unfinished.



5. Repeat Step 4 to make (4) pieced units total.
6. Place (4) E – squares with (4) Step 4 pieced units, right sides together. Sew on the drawn diagonal lines. Trim excess corner fabric to ¼". Press toward the corners to make (4) block corner units that measure 4 ½" x 4 ½" unfinished.



7. Arrange (4) block corner units, (4) B – rectangles, and (1) D – square as shown. Sew the pieces together in rows and press. Then sew the rows together and press to complete Block 1. Block 1 should measure 10 ½" x 10 ½" unfinished.



*Due to the hand-crafted nature of batiks, fabric may vary from images.



Watch and sew along on our YouTube channel.
©2024 Riley Blake Designs and Lori Holt. All Rights Reserved.